

To consider a request for the installation of a noticeboard and seating at the Recreation Ground – Trevor Chadwick Memorial Trust

The Council has received a request from the Trevor Chadwick Memorial Trust for the installation of two benches and a lectern style noticeboard at the Recreation Ground. Images and information regarding this proposal are appended to this report.

It is proposed that these works, if approved, would be funded by the Trevor Chadwick Memorial Trust and undertaken by contractors working on their behalf and therefore it is proposed that matters such as timing, permissions and health and safety considerations be delegated to the Assets and Compliance Manager for final approval.

Decision required

Whether or not to approve the installation of two benches and a noticeboard at the Recreation Ground at the location and of the style shown on the appended plan.

That, should approval be given, matters such as timing, permissions and health and safety considerations regarding the works be delegated to the Assets and Compliance Manager for final approval.

Gail Percival
Assets & Compliance Manager

March 2023



We would like to place a notice board like the one at the Albert Memorial in PAG,
(Photo enclosed).

We would also like to site two seats (like those at the Bandstand) these would sit ei-
ther side of the information board.

Enclosed

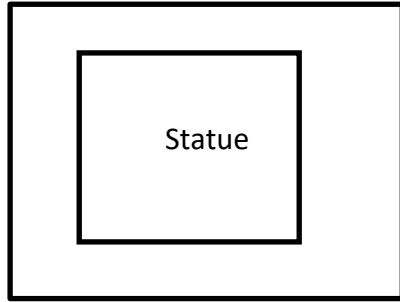
Site plan

Photo 1 Proposed Location

Photo 2 Notice board at the Albert Memorial

Photo 3 Type of display

Footpath 1.8



6.5 Mts

6.5 Mts



Not
To Scale



Existing fence



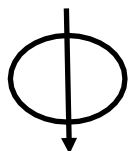
Notice Board 1188mm x 841mm



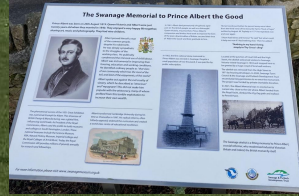
Seats donated by Chadwick Trust (600x 1.8mts)



New Paving Slabs




North



The Swanage Memorial to Prince Albert the Good

Prince Albert was born on 26th August 1819. Queen Victoria and Albert were just twenty years old when they married in 1840. They enjoyed a very happy life together, sharing art, music and photography. They had nine children.



Albert proved himself a man of the common people, despite his noble birth. He was deeply sympathetic to the struggles of the working class. He publicly condemned the immoral use of child labour. Albert was instrumental in improving their housing, education and working conditions. He identified ordinary people as "that class of our community which has the most of the toil and least of the enjoyment of this world". Albert spoke out against the evil cruelty of slavery, which he described as "atrocious" and "repugnant". This did not make him popular with the aristocracy, many of whom profited from this terrible exploitation to increase their own wealth.

In 1861, Albert died prematurely of typhoid, aged just 42. The British people, as well as a distraught Queen Victoria, mourned him. Prince Albert's compassion and foresight had won him the love of the poor, downtrodden of Britain, secured their love of "Albert the Good" and their gratitude to him.

His last words just before he passed away were taken from the third verse of his favourite hymn "Rock of Ages", written by August M. Toplady in 1771 he repeated over and over again:

**"Nothing in my hand I bring
simply to Thy Cross I cling"**


The phenomenal success of the 1851 Great Exhibition was a personal triumph for Albert. This showcase of British Design & Manufacturing, was a global first, influencing world trade. As President of the Royal Commission, Albert used the profits to build museums and colleges in South Kensington, London. These national treasures include the Science Museum, V&A, Natural History Museum, Imperial College and the Royal Colleges of Art & Music. Today, the Royal Commission still provides millions of pounds annually for research and fellowships.



Albert transformed Cambridge University during his time as Chancellor in 1863. His radical reforms, when bitterly opposed, ended the curriculum and created a world-class centre of educational excellence.




Located at the junction of Court Hill and the High Street, the obelisk welcomed visitors to Swanage. Victoria visited Swanage in 1833 and stopped here to be greeted by a huge crowd of local well-wishers. The obelisk was removed from the High Street in 1971 by housing developers. In 2000, Swanage Town Council & the Swanage and Purbeck Development Trust secured planning permission to re-erect the monument. The project was funded by private charitable donation. In 2021, the Albert Memorial was re-erected on its current site, close to the site where Albert landed from the Royal Yacht, climbed the Zig Zag path and walked to Pevensey Point.



The Swanage obelisk is a fitting memorial to Prince Albert, a social reformer, who modernised industrial Victorian Britain and indeed, the British monarchy itself.

For more information please visit: www.swanagemuseum.org.uk



To consider a request from Cancare for a Memorial Garden at Prince Albert Gardens

In November 2022 the Town Council were contacted by Cancare Purbeck Cancer Support Group requesting that a Memorial Garden be developed within an area of Prince Albert Gardens to provide a quiet space to enable people to sit and remember their loved ones, as a benefit to the local community. It was proposed that the garden be funded by the charity.

An initial meeting was held at Prince Albert Gardens on 8th February 2023 with members of the Cancare Purbeck Committee, Councillors Bonfield and Moreton, the Council's Horticulture Specialist and the Assets and Compliance Manager. The initial proposal was discussed and it was agreed a further meeting with the Garden Designer engaged by Cancare be scheduled for 15th February 2023.

At this meeting, the proposal was further explored and a range of considerations in respect of planting, access, surfacing, design and landscaping were discussed.

The Council have since received in March 2023 a Preliminary Ideas-Inspiration-Concepts plan from Garden Design by Michelle Brown, appended to this report.

It is suggested that should a Memorial Garden in this location be approved that the following matters are considered:

- Exploration of requirements regarding planning permission;
- Requirement for permission from Dorset Council under the terms of the conveyance of Prince Albert Gardens to the Town Council;
- Immediate and long-term maintenance requirements in respect of time and cost;
- Location of services such as electricity and water;
- Health and Safety;
- Ease of access for a wide variety of users;
- Sympathy with the surrounding area in terms of planting and design;
- Resilience to potential anti-social behaviour;
- Timing of any works.

It is, therefore, proposed that should permission be granted for the Memorial Garden, discussion and agreement with Cancare Purbeck and the garden designer on specific aspects of the proposal be delegated to the Assets and Compliance Manager to ensure a satisfactory outcome for all parties. To this end, it is also recommended that a licence agreement be entered into between the Council and Cancare Purbeck for the duration of the works, similar to that used on other projects, for example the Prince Albert Memorial project. Finally, it is proposed that oversight of this project be for the attention of the Community Services Committee.

Decisions required

To consider approving the installation of a Memorial Garden at Prince Albert Gardens with reference to the Preliminary Ideas-Inspiration-Concepts plan from Garden Design by Michelle Brown.

To consider delegating to the Assets and Compliance Manager decisions regarding specific aspects of the proposal as outlined in this report with oversight of the project to be undertaken by the Community Services Committee.

To authorise the drawing up of a Licence Agreement between the Council and Cancare Purbeck.

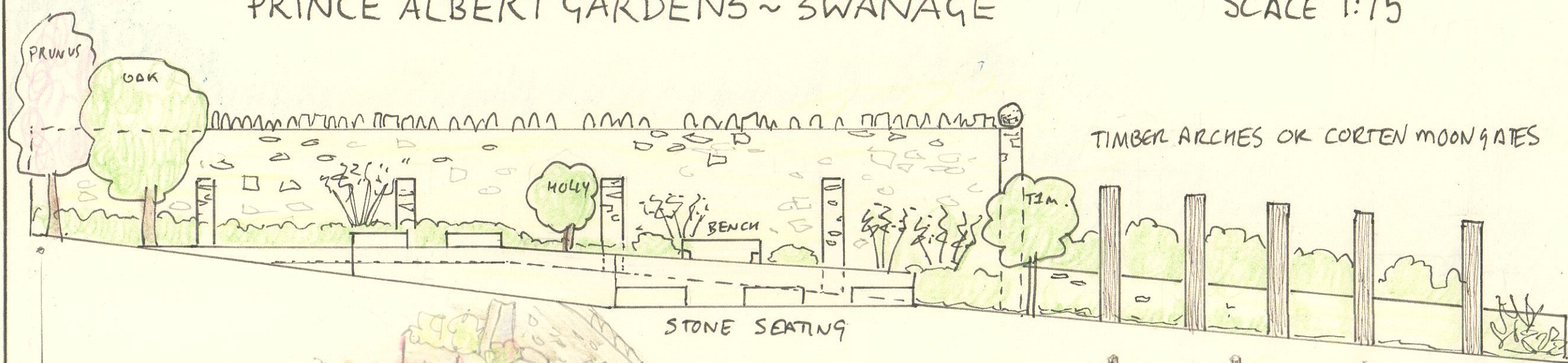
Gail Percival
Assets & Compliance Manager

March 2023

CANCARE-SANCTUARY GARDEN

PRINCE ALBERT GARDENS ~ SWANAGE

SCALE 1:75



ELEVATION A-A



ALTERNATIVE ENTRANCE WITH TIMBER ARCHES NOT TO SCALE

STIPA gigantea x3, *ASAPANTHUS Alba* x8
IRIS var x15, with *PALOMIS samia* x12
 planted in groups of 3, *ALLIUM* var x18

LAVANDULA 'Rosea' x14

ENTRANCE PATH 2.8mW

TIMBER ARCHES OR CORTEN

STEEL MOONGATES x5

2.3mH x 2.3mW x 2.00mD

CLIMBERS x5 to include

LONICERA 'Rhubarb + Custard' x2

TRACHELOSPERMUM jasminoides x3

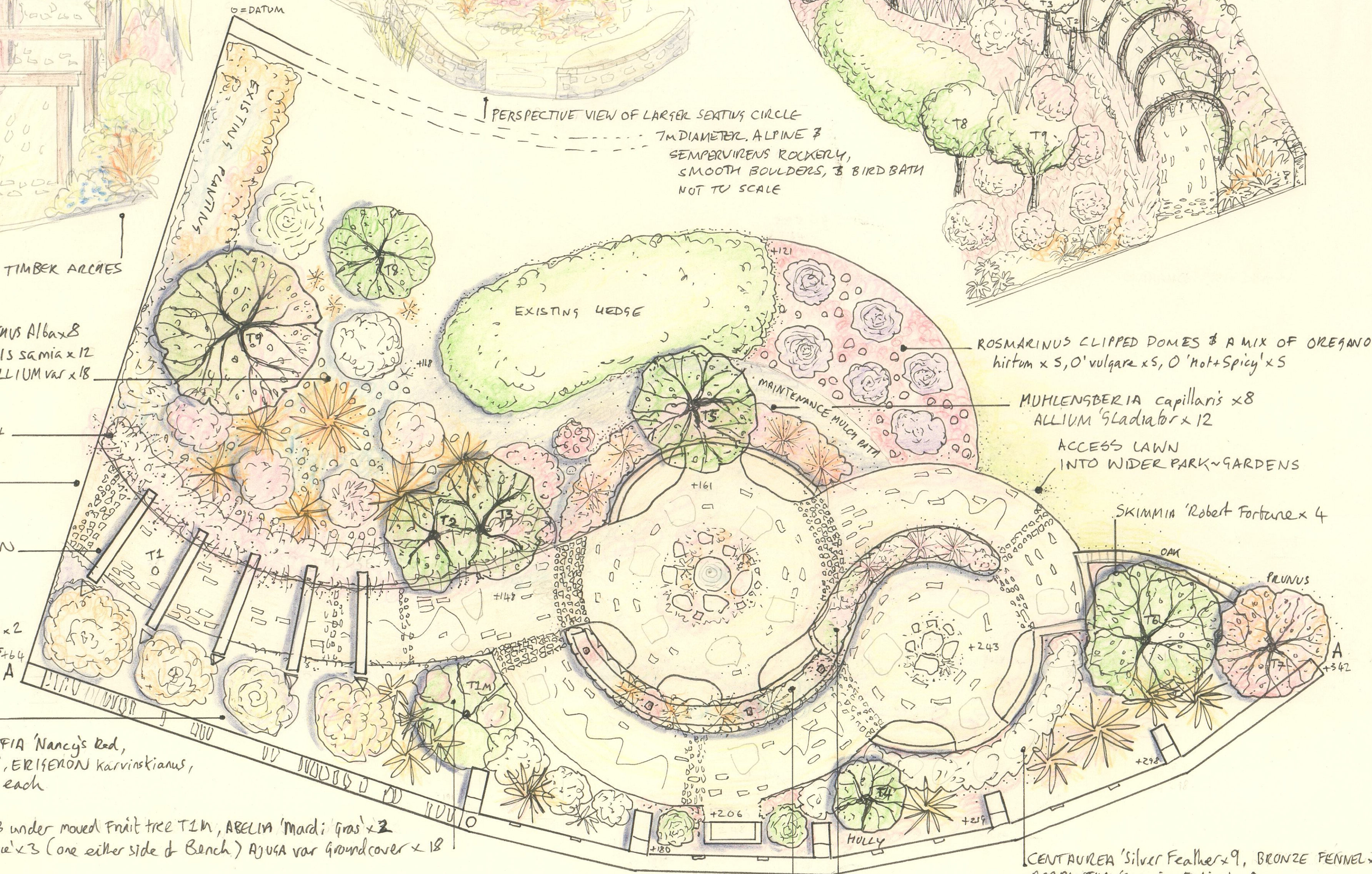
PITTIOSPORUM tubra x4

underplanted with *KNIPHOFIA 'Nancy's Red'*,
ERYNGIUM 'Victory Blue', *ERIFERON karvinskianus*,
AGAPANTHUS var x9 of each

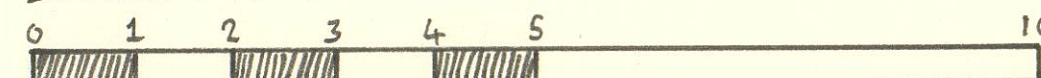
BUDDLEIA 'Hot Raspberry' x3 under moved fruit tree T1M, *ARELIA 'Mardi Gras'* x2

DAPHNE 'Eternal Fragrance' x3 (one either side of Bench) *AJUCA* var groundcover x18

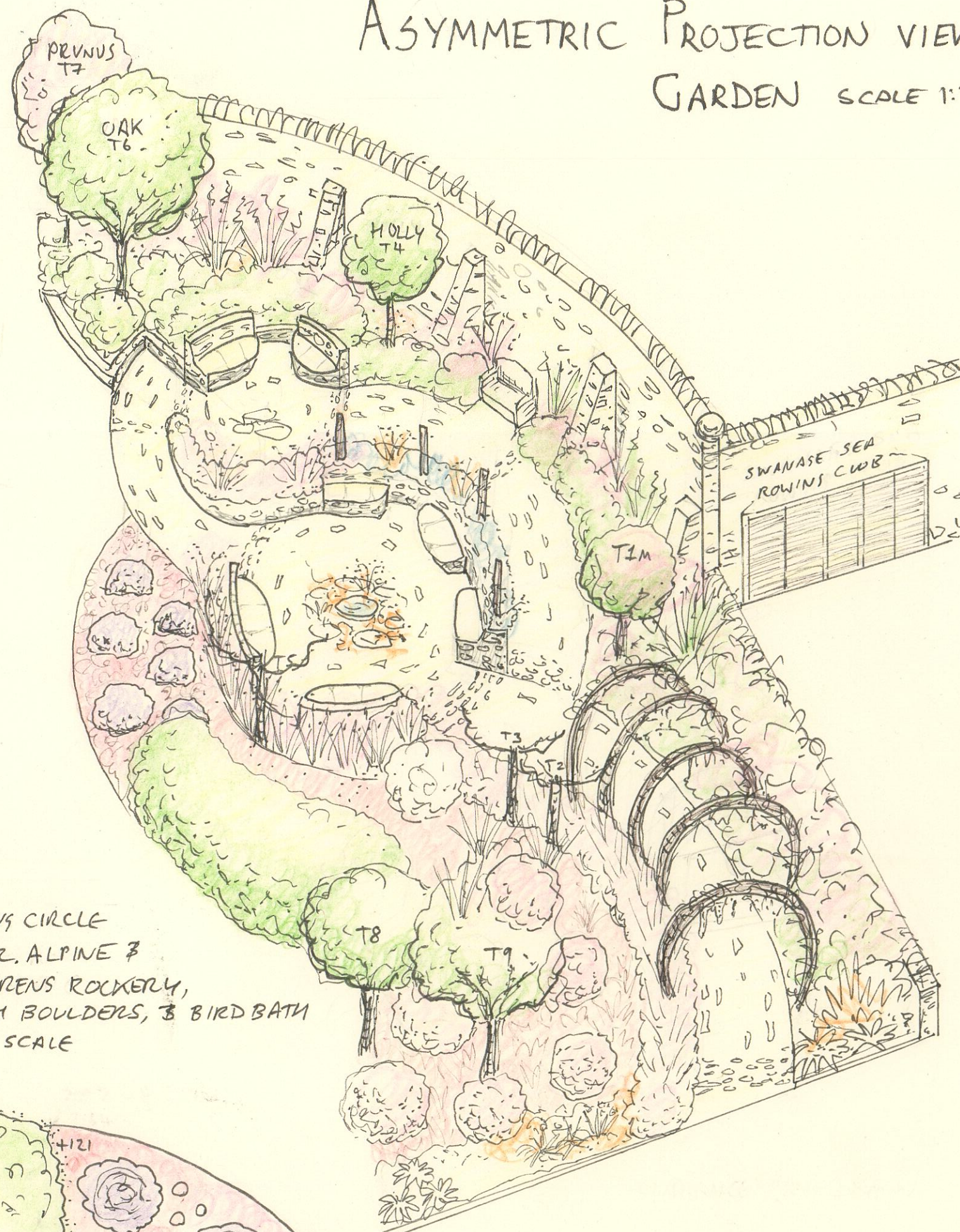
PLAN VIEW OF GARDEN



SCALE BAR 1:75



ASYMMETRIC PROJECTION VIEW OF GARDEN SCALE 1:75



DESIGN NOTES

ALL EXISTING TREES TO REMAIN, T2 COULD BE REMOVED TO CLOSE TO T3. T5, T6, & T8 CANOPIES TO BE LIFTED. T1 SMALL FRUIT TREE TO BE REPLANTED TO T1M NEAR BUTTRESS 1
 ALL PROPOSED PATHS & PAVED TO BE PURBECK STONE (LIMESTONE) SETTS & COBBLES WITH A MIXTURE OF RIVEN & TEXTURED FLAGSTONES.

SEATING INCORPORATED INTO PURBECK LIMESTONE WALLS THIN RANDOM LAYOUT, MORTAR JOINTS, MATCHING ROWING CLUB WALL & ADJACENT PIERHEAD DEVELOPMENT.

KERBSIEDING EITHER PURBECK LIMESTONE OR CORTEN STEEL 150mm H UPSTAND, TAPANS RAIL MOON GATES OR TIMBER ARCHES AT ENTRANCE 2.3mH x 2.3mW. PROPOSED LIGHTING BETWEEN BUTTRESSES (UPLIGHTERS), SET IN FLOOR LIGHTS OR WALL DENOTING EDGES OF SEATING AREAS, OR TBC SOLAR TIMBER BOLLARD LIGHTING.

SEATING AREAS, FOCAL POINTS STONE SMOOTH BOULDERS, BIRD BATH & ALPINE PLANTING SCHEME. *ARMERIA maritima*, *SILENE uniflora*, *SEMPERVIVUM* varieties, *SAXIFRAGE*, *ECHEVERIA*.

OR ALTERNATIVE FOCAL POINT PLANT *DASYLIRION longifolium*.

GARDEN DESIGN

BY

MICHELLE BROWN

07967750256 iamichelle.brown77@gmail.com

CANCARE-SANCTUARY GARDEN
 PRINCE ALBERT GARDENS
 SWANAGE BH19 2AR

SCALE 1:75 @ A1

DATE FEBRUARY 2023

DRAWN BY MICHELLE BROWN

Cancare Sanctuary Garden

Preliminary Ideas-Inspiration-Concepts

Prince Albert Gardens – Swanage

Garden Design by Michelle Brown –

Website: gardensbymichelle.co.uk

March 2023



- **Planting**

- **Site Location**

- **Arches**

- **Paving**

- **Alpine Stone Boulder Rockery or ideas for Focal Points**

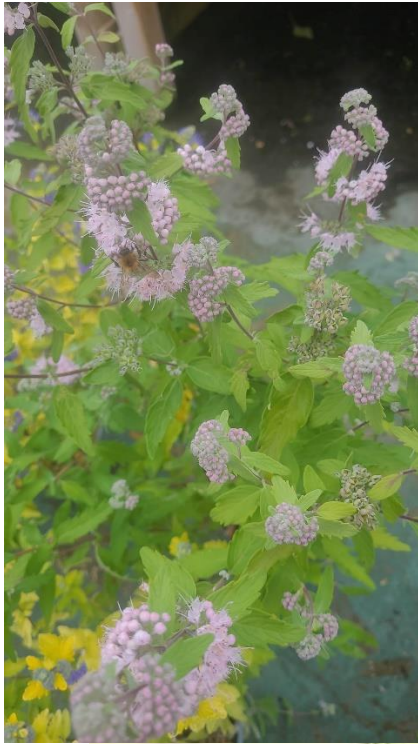
- **Seating**

- **Lighting**

- **Kerbs- Edging**

Planting





OF LAYAL, WESTY CHIEP

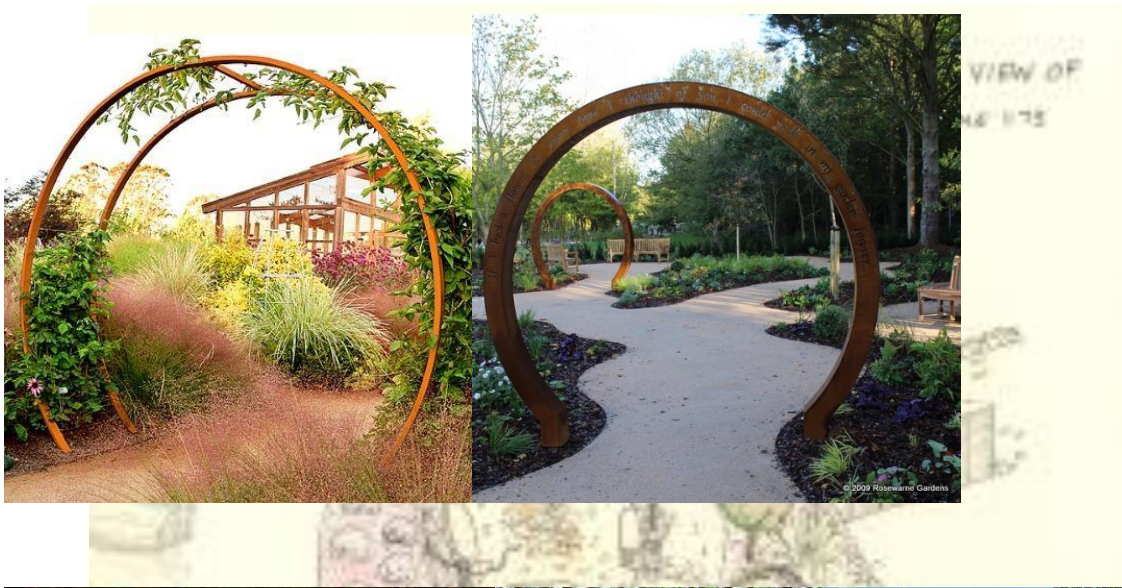


Post support for Lonicera Chic et Choc

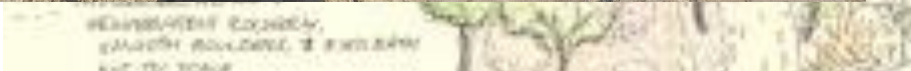
Site Location



Entrance Arches Ideas



Paving – Swanage Promenade



Rumble Strips around the garden, slowing the users pace.



Alpine planting inspiration- Focal Points in Circular Seating areas



Seating perching benches possibilities reduce size to fit centre of largest seating area

Stone Seating – Corten Steel – Boulders – Shapes

ASYMMETRIC PROTECTION VIEW OF



MARSHY CLIFFED BANKS & A BIT OF GRASSY
area & 1/2 of valley of O'Neil Spring's
PHYSIOLOGICAL requires of
ALLISON (Landscape) & Co
ACCESS LAWN
INTO ANDER PIER-FARRENS
Morgan (Landscape) & Co



Lighting



Timberlab - Bosco Solar

Light source: LED, Solar

Fixing: Root fixed, Surface / baseplate fixed

CONTACT

Public Spaces

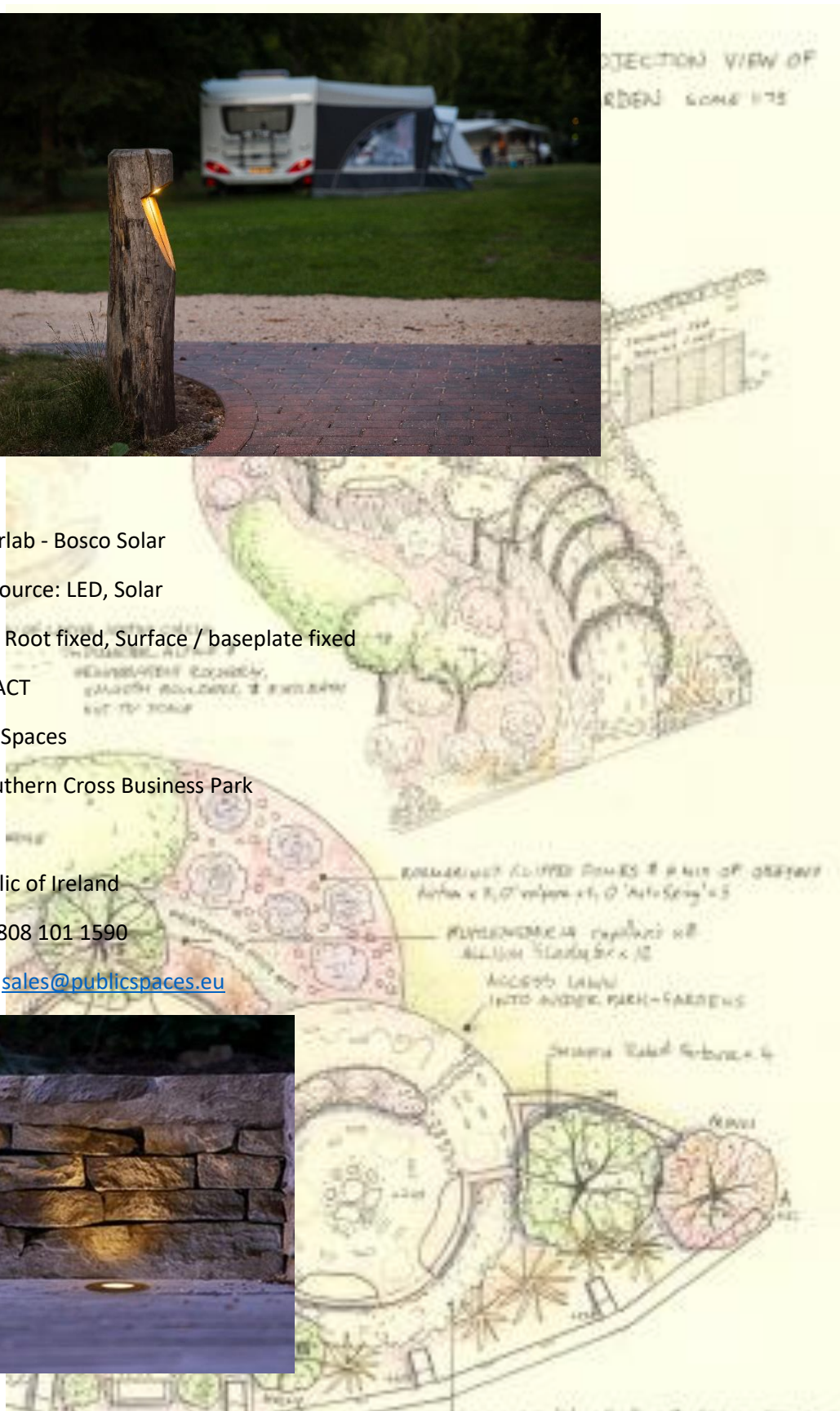
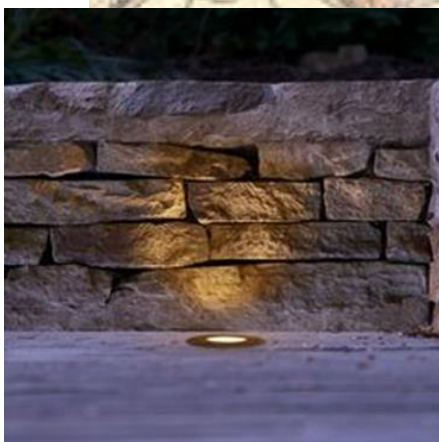
1A Southern Cross Business Park

Bray

Republic of Ireland

Call: 0808 101 1590

Email: sales@publicspaces.eu



Kerbs – Edging – Tap rail for visually impaired



Review of Swanage Town Council’s Memorial Bench Policy

Minute No. 11)a) of the Community Services Committee meeting held on 9th November 2022 recorded a request for a review of the Council’s Memorial Bench policy and noted the very lengthy waiting list for commemorative seating.

The Council’s current procedure in respect of memorial benches was agreed in Minute No. 6 of the meeting of the General Operations Committee held on 6th February 2008. In summary it set out a fee for the purchase and dedication of a bench for a period of five years. Under Minute No. 10)b) of a meeting of the same committee held on 4th April 2012, it was agreed that a maintenance fee be charged for each bench five years from the date of installation. At the General Operations Committee held on 15th November 2017, Minute No. 8 records that the waiting list for benches was extensive and that as no additional seating was currently being provided, and the waiting list for memorial benches was closed.

The Council has circa 130 memorial benches across the estate in a wide variety of locations, most commonly benches are of the Eastgate design, with timber slats and cast ends, although a minority are made from recycled plastic. Each winter, a number of benches, circa 10-15, are identified as being in the poorest condition and are brought into the Depot for refurbishment. The vast majority of benches are memorial benches with inscribed dedications with a very small minority, generally those unsuitable for fixing a dedication such as metal painted benches, being vacant.

In January 2023, attempts were made to contact those people remaining on the waiting list for a memorial bench. This amounted to 42 people who had been on the waiting since at least November 2017 when the decision had been made to close the waiting list. For a variety of reasons 22 people have now been removed from the waiting list with 20 expressing an interest to remain.

In respect of the extended maintenance fees paid five years after installation, three people are currently within a five-year period from their most recent payment.

There remain limited locations to install new benches, although it may be that the future seafront stabilisation and flood defence public realm enhancements that are scheduled for public consultation later this year will offer some opportunities. It should be considered, however, that the maintenance resource that benches require is significant and that the number that can be effectively refurbished each winter is unlikely to exceed the current number given other priorities.

On this basis it is proposed:

- That the Council’s policy for the purchase and dedication of memorial benches is suspended;
- That the Council’s policy in respect of levying a maintenance charge 5 years following installation of a bench is withdrawn;
- That the Council’s waiting list for memorial benches remains closed;
- That priority is given to those 20 people who have continued to express an interest in remaining on the waiting list for a memorial bench and that each is approached individually in order of duration of time on the list to ascertain how the Council may

resolve their wish for a memorial. This could include the offer of an inscription on an existing bench, (two memorials on the same bench), information regarding the Memorial Plaque scheme provided by the Council at Godlingston Cemetery or a commitment from the Council that they will remain on the list until such time as opportunities for new benches are identified.

Decisions required

To consider the following:

- Suspending the Council's current memorial bench policy.
- Withdrawing the Council's policy to charge a maintenance fee five years following installation of a memorial bench.
- Keeping the waiting list for memorial benches closed.
- Prioritising, in order of time, the 20 individuals who have recently expressed an interest in remaining on the waiting list for a memorial bench by offering an inscription on an existing memorial bench, a memorial plaque at Godlingston Cemetery or a commitment to remain on the waiting list until opportunities to locate new benches are identified.

Gail Percival
Assets & Compliance Manager

March 2023

Swanage Cricket Club – to consider extension of lease of Lower Grammar School Field

At the Council meeting held on 22nd March 2022, Minute No. 158 it was resolved to assign the remainder of the current Allnatt Centre lease to Swanage Cricket Club, conditional upon the Club providing an undertaking that it will work with St Mary's Primary School to facilitate access to the western end of the site for educational purposes and will not object to the possibility of a footpath being constructed around the perimeter of the field. It was further resolved that, in light of the social and environmental benefits of the Cricket Club's activities, the annual rent be reduced to £50 p.a.

This five year lease is due to expire later in 2023 and a new lease on the same terms has been requested by Swanage Cricket Club.

The information below has been received from Swanage Cricket Club in March 2023 regarding their current activities and future plans. To note the Lower Grammar School Field is referred to as the Nursery Ground.

Numbers of adults and youth continue to increase to an extent that we considered entering a 4th team in the Dorset league, although ultimately, we chose not to, on the basis that it was probably a year too early in terms of development, so we hope to enter a 4th team in the 2024 season. The 4th team is proposed to be a mixture of youth and women and girls who have expressed an interest in playing hard ball competitive cricket. The 4th Team would use the Nursery ground.

The Youth section continues to be strong with 6 teams entered in the 2023 league season between the ages of 8 and 19. In addition, we have Kwik cricket for U7's. We have also been developing a relationship with the Cambian School, to give children with physical/mental disabilities the facilities to enjoy cricket in a safe surrounding. This resulted in a number of children, from Cambian, using the Nursery Ground to learn basis cricket skills. At present we are in the process of becoming a Disability Champion Club linked with Dorset County Cricket and with the aim of working with the school throughout the year.

We have invested in putting members through recognised coaching course and we can now boast 12 core/level 2 Coaches and 6 level 1 Coaches, these numbers will continue to grow over the next few years. This enables us to offer qualified coaching to all playing members in a safe environment. In addition, we also go into Swanage Primary, St Mary's, St Mark's and the Swanage School providing cricket coaching and to encourage participation in the game outside of school.

We were able to host a women and girls "round robin" tournament against teams from Dorchester and Puddletown. We intend to hold similar tournaments this coming season and our women and girls team have also been approached by a club to play their ladies team, whilst they tour the area.

We are also looking at providing "walking Cricket" in the 2023 or 2024 season. The facilities we are able to offer haven been well received by visiting teams and many positive comments regarding the work/improvements undertaken, have been received from players, visitors, and local residents.

We will also continue to offer croquet facilities for those wishing to play socially. The club is very aware that continuing to offer croquet is important for the social interaction, exercise, and mental wellbeing. Two croquet lawns have already been marked out for use from the beginning of May.

The club were awarded, by the Dorset Cricket Association, the Jack Douch trophy for being the best community club in the Dorset leagues. This is a very prestigious award which the club were honoured to receive and reflects the standing of the club in the community and county generally. Also, one of our younger members has been recognised nationally by the England and Wales Cricket Board, as grounds person of the year for his work on the creation and development of the nursery ground. He is also due to be interviewed by the Grounds Management Association to promote careers within the grounds management industry. In addition, Tim Ives, our Treasurer and Youth Development manager received the Swanage Town Council Community Award 2022.

As agreed, we have taken back the scrub around the ground which we are in the process of levelling out. The reclaimed areas will be seeded to extend the size of the outfield. Under the supervision of Simon Goldsack, of Holme Nurseries, we have also recently planted over 80 young trees and approximately 500 hedge plants (of various native species) to enhance the environment and encourage mammals, birds, and insects. The hedge and trees will eventually provide a screen between the Nursery ground and the adjoining School.

We have coppiced and laid, where possible the hedge dividing the Nursery ground with the main ground and have constructed “dry hedges” around the “upper field” on the west side of the Nursery ground. In conjunction with St Mary’s School, we have also constructed a “dry hedge” enclosed area close to the school which will have benches installed which the school will be able to use as a study area. The school also use the “upper field” area occasionally for environmental studies.

Decision required

To consider recommending to full Council that a new Lease is provided to Swanage Cricket Club for the Lower Grammar School Field for a period of five years at a charge of £50 per annum, this sum to reflect the social and environmental benefits of the Club’s activities.

Gail Percival
Assets & Compliance Manager

March 2023

Memorial Testing and Inspection – Godlingston Cemetery and Northbrook Cemetery

A number of the Council's Operations Team have undertaken Accredited Industry Training in Memorial Testing and achieved the required level of competence. Whilst memorial testing and inspection is undertaken routinely and on an ongoing basis, it was decided that in February 2023 a wholesale testing schedule of all memorials in both Godlingston and Northbrook cemeteries would be undertaken. The purpose of such testing is to ensure the health and safety of those visiting the cemetery through testing the stability of memorials.

This inspection has now been completed. To date one urgent health and safety matter in Northbrook Cemetery has been attended to and correspondence has been sent to five grave owners at the last recorded address held by the Council.

In accordance with Godlingston Cemetery Regulations and best practice information received from the Institute of Cemetery and Crematorium Management the following actions are proposed.

- A second review of all memorials identified as defective in some way is undertaken to ensure consistency of approach;
- The resulting memorials that require attention due to health and safety considerations are identified;
- That grave ownership information for such memorials is identified and where possible, those grave owners contacted and requested to undertake necessary actions to ensure safety;
- Where it is not possible to contact the grave owners, to place at the graveside and in a prominent place within the cemetery a notice with a timescale of not less than 2 weeks stating that the Council propose to take such necessary actions to make safe the memorial;
- That information is placed on the Council's website and Facebook page outlining the process the council is taking in respect of memorial safety.

For information

To note the memorial testing programme recently completed at Northbrook and Godlingston cemeteries and the information provided on proposed next steps to make safe memorials that present health and safety risks to the public.

Gail Percival
Assets & Compliance Manager

March 2023

Proposed clarification of cemetery regulations regarding installation of memorials in advance of interment

The Town Council has recently received requests from a small number of families to purchase a cremation plot and install a memorial to the deceased prior to any plans being made for the interment of that person's ashes. This is a relatively minor issue, but one of the requests has been made by a Council officer and therefore the Committee is asked to consider the matter to ensure maximum transparency.

The specific circumstances in respect of one of the requests is that the husband of the deceased would like to purchase a cremation plot and install a memorial but postpone the interment of his wife's ashes until the time comes to inter his own. This is so that he can keep his wife's ashes at home and, in due course, for them to be buried together.

It could be questioned whether this is in contravention of the Council's policy against pre-purchase. Therefore, independent advice has been sought from the Institute of Cemetery and Crematorium Management (ICCM), as follows: 'As the gentleman is intending to place a memorial on the grave now, it probably isn't a pre-purchase, even though the burial won't take place until both sets of ashes can be buried together. I would therefore call this a purchase rather than a pre-purchase'.

If the committee were to approve this practice, the purchaser of the grave/cremation plot would still need to complete an Interment Form and sign that 'it is proposed to inter the above named person in Godlingston Cemetery'. The form, however, would simply state that the date of interment is to be confirmed.

Decision Required

To agree whether or not to permit the purchase of a grave/cremation plot and install a memorial for a deceased person prior to their interment at an unspecified future date.

Gail Percival
Assets & Compliance Manager

March 2023

Proposed addition to Allotment Tenancy Agreements – 2023/4

Further to a request made to the Chairman of the Community Services Committee by the Allotment Association, the Council has undertaken a review of the current Tenancy Agreement for Allotment Gardens. This was undertaken with reference to the National Allotment Society of which the Council is a member, and the Law of Allotments Handbook (5th Edition).

It is proposed that one additional clause is added to the current agreement from 1st October 2023 as follows:

‘Take proper precautions when using sprays or fertilisers to minimise any adverse effects on the environment and comply at all times with current regulations’

This is a model clause taken from the Law of Allotments Handbook and will ensure that the agreement is no longer silent on the matter of the use of herbicides and fertilisers and will also provide conformity with the Council’s environmental agenda.

Consultation with Tenants will be undertaken in respect of this potential addition as follows:

- Correspondence to the Allotment Association in order that this proposal can be communicated to the membership;
- Signage displayed on noticeboards within the allotments;
- Any new tenancies that are created between this time and the 1st October 2023 be advised of this proposal in writing.

Any representations received in respect of this proposal will be fully considered and responded to by the Assets and Compliance Manager.

Decision required

To consider the addition of a new clause within the Tenancy Agreement for Allotment Gardens regarding the use of sprays or fertilisers as outlined within this report to be effective from 1st October 2023 and to note the consultation with allotment holders that is proposed.

Gail Percival
Assets & Compliance Manager

March 2023

Former Grammar School Weathervane

On December 12th 2022 the Council formally accepted the handover of the former Grammar School weathervane from Barratt Homes. This had been removed as part of the demolition works undertaken by Barratt Homes at the Compass Point development and refurbished prior to being handed over to the Council.

A future location for the weathervane has not yet been resolved and it is currently in storage. One suggestion that has been made is for it to be displayed at the Swanage School to reflect the continuation of secondary education within Swanage.

Decision required

To recommend to full Council proposals and suggestions for the location of the former Grammar School weathervane.

Gail Percival
Assets & Compliance Manager

March 2023

Swanage Croquet Club Request to Use Part of the Queen Elizabeth Field

Introduction

Swanage Croquet Club has lost its use of the outfield at the Swanage Cricket Club and is looking for an alternative venue. There is no possibility of using the Cricket outfield going forward.

The Swanage Croquet Club has between 85-100 members, mostly of retirement age who rely on the club for exercise, fresh air, camaraderie, and maintaining their wellbeing.

At the Cricket Club we had use of four lawns, two and a half days a week.

The Swanage Croquet Club is also competitive having won the High Handicap Southwest League (being beaten in the regional final), and having won the Handicap Southwest league and final. We have been invited to play in the National Handicap competition in 2023.

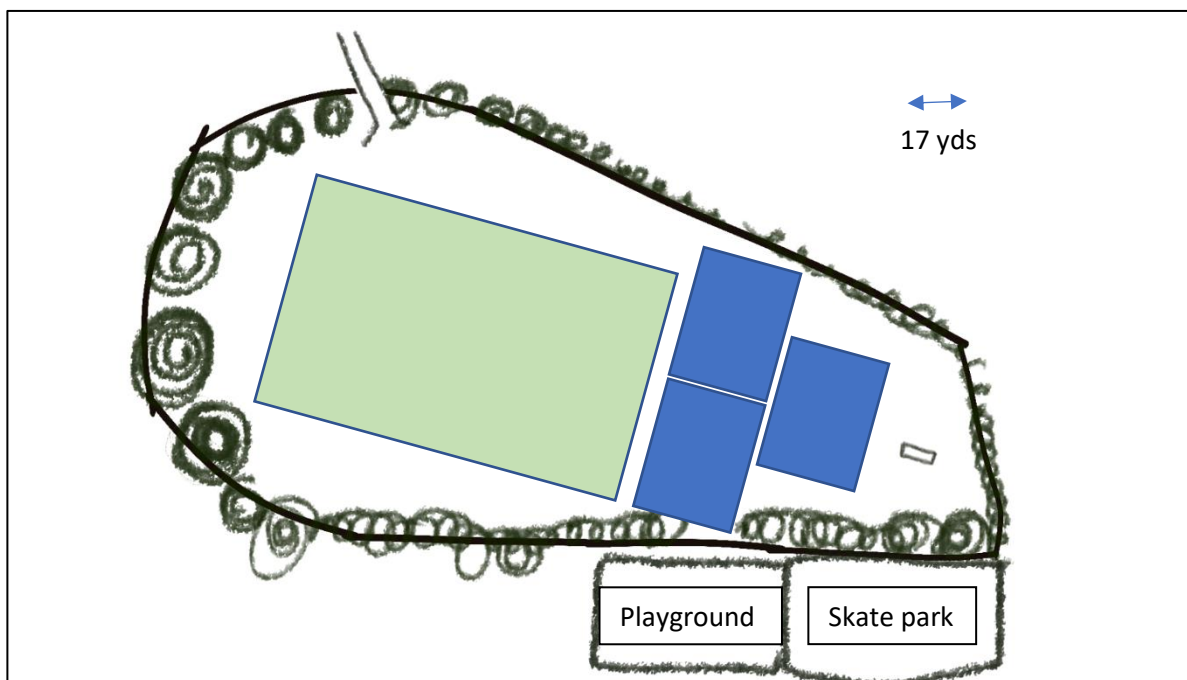
The Queen Elizabeth II Field

The Queen Elizabeth II Field, a large flat open space in the centre of Swanage, would be an ideal venue for croquet. At present it is used intermittently by the Swanage Football Club, a pitch being marked out for their use, and by (dog) walkers for exercise.

The Croquet Club's needs

We believe that three lawns would be adequate for our needs as we would hope to play at least five days a week.

The diagram below shows (to scale) the Queen Elizabeth II Field with three croquet lawns (in blue) shown at the east end. These lawns would overlap the current position of the football pitch, but moving the football pitch 30m to the west would remove the overlap. There is space to move the pitch by as much as 50m. Both the Croquet Club and the Football Club could then make use of the space.



Maintenance

The Croquet Club undertakes to maintain the whole of the Queen Elizabeth II Field during the croquet playing season. We would mark out our lawns in the same way as the football pitch is marked out. The lawns would be cut short (about 10-15mm) while the remainder of the field would be left longer (50mm).

Storage

The Croquet Club requests permission to install a shipping container next to the existing container for storage of lawn maintenance equipment (including roller, tractor mower, cylinder mower, croquet hoops, balls, mallets etc).

Opportunities

It is the hope of the Croquet Club that, with the proximity of the Queen Elizabeth II Field to the centre of town and the main car park, we can provide an opportunity for holidaying visitors to play croquet, which has only been possible in a very limited way at the Cricket Club.

Timing

There is a sense of urgency if the Croquet Club is to be given permission to use the Queen Elizabeth II Field. We would need to roll and start to prepare the lawns from mid-March when the ground is dry enough. Once the ground has dried out it becomes impossible to roll it. An early decision would be appreciated.

Conclusion

The Queen Elizabeth II Field is an open space protected by Fields in Trust in perpetuity. Fields in Trust retain such spaces as a public park, playing field or recreation ground (see <https://www.fieldsintrust.org/what-is-protection>).

The Draft Swanage Town Council Corporate Plan Vision includes '*Opportunities will be considered to reinforce service provision through the improvement of health and sports facilities*'.

We believe that providing the local community with the opportunity to play croquet on the Queen Elizabeth II Field fulfils the aspiration of both the Fields in Trust and Swanage Town Council.

Simon Parvin
Bruno Charron
Gary Coleman

For Swanage Croquet Club

To consider a request from Swanage Croquet Club for use of part of Queen Elizabeth II (Forres) Field

In January 2023 the Council were approached by Swanage Croquet Club with a request to use part of Queen Elizabeth II (Forres) Field for three croquet lawns. In order to understand the proposal more fully, a meeting with Councillors Moreton and Tomes, representatives of Swanage Croquet Club and officers was held on Forres Field on 25th January 2023. A full proposal in respect of the use of Queen Elizabeth II (Forres) Field was subsequently provided by representatives of the Club and is appended to this report.

Key aspects for consideration include:

- The proposed layout showing both the football pitch and the croquet lawns;
- The offer to maintain the whole of the Queen Elizabeth II Field during the croquet playing season;
- The request for a shipping container to be installed next to the existing football container for storage of lawn maintenance equipment (n.b. the Council is currently anticipating a request from Swanage and Herston Football Club for permission to site a larger container in this location for youth football teams);
- The deeply cracked surface of the field during the summer months;
- Access to water and the relevant permissions that are likely to be required should this be sourced from the adjacent stream;
- Parking arrangements for club members and visitors;
- The timing of any decision regarding this request given the considerations regarding the lawn preparation and maintenance requirements;
- The duration of any arrangement with the Croquet Club;
- Consideration of the terms of use and the fee to be charged.

The Fields in Trust website contains the following information about the field: ‘Forres Field is a large public open space adjacent to King George V Playing Field in Swanage. It is situated in the heart of the town and is the main site for youth football. The community really value this open space as a place for formal or informal recreational activities’.

If approved, consideration will need to be given to the basis on which the Croquet Club make use of the land, either as a series of short term lets, or a non-exclusive licence agreement for the season. If any charges were to be incurred in the drawing up of an agreement it is proposed that these would be chargeable to the Club. In terms of hiring charges, football pitches on Forres Field and King George’s are charged at £25 per game for adult teams.

In an e-mail dated 2nd February the Croquet Club propose a one-year trial. If the Committee agrees to the Club’s request, this would appear to be a sensible approach given the need to assess whether the field is playable due to cracking in the summer months.

Decision required

To consider the request made by Swanage Croquet Club for the use of part of the Queen Elizabeth II (Forres) Field as summarised within this report and set out in the appended proposal.

If approved, to recommend to Council the fee to be charged.

Gail Percival and Martin Ayres
Assets & Compliance Manager and Town Clerk

March 2023